



KANSAS GEOLOGICAL SOCIETY

# BULLETIN

Volume 93 Number 3

May - June 2018

Established 1925

## IN THIS ISSUE

**Demographic Membership Analysis of the KGS**

**page 10**

**By Rocky Milford**



Photo from Utah Geology by Luca Galuzzi, 2007



# THE TOTAL PACKAGE

www.dawson3d.com



MIDLAND 432-684-3000 | HOUSTON 713-917-6772  
OKLAHOMA CITY 405-848-7512 | DENVER 303-723-0440  
PLANO 972-881-1099 | CALGARY 403-263-7770

## Use Your KGS Library For All Your Printing Needs

Old photos?  
Old documents?  
We can scan them for you!

## Robert F. Walters Digital Library

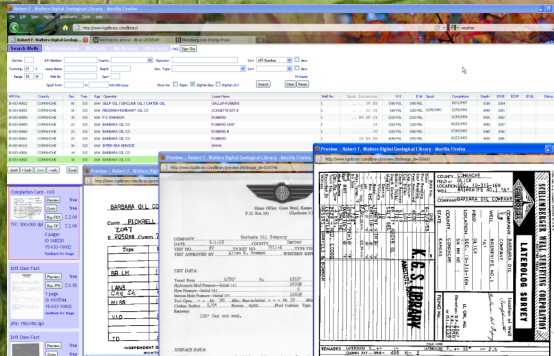
The most complete source for Kansas data

Database updated nightly

Day or Night  
You can get to the data as you need it

[www.kgslibrary.com](http://www.kgslibrary.com)

To Join: call 316-265-8676



## THE RIGHT CHOICE FOR SEISMIC



SERCEL UNITE & INOVA HAWK CABLE-LESS SYSTEMS

CENTRALLY OWNED & OPERATED IN WICHITA, KS

AHV-IV COMMANDER 362/364 VIBS

HSE MANAGEMENT PROGRAM

SAFETY & QUALITY ORIENTED

PERMITTING SERVICES

3500 N. Rock Rd. Bldg. 800 Wichita, KS 67226

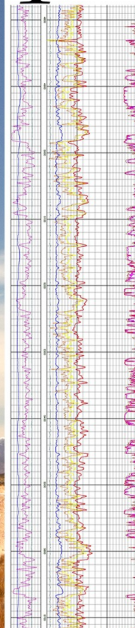
Phone: (316) 636-5552 Fax: (316) 636-5572 Website: [www.paragongeo.com](http://www.paragongeo.com)



Celebrating  
40 years of  
excellence

# EVERYTHING WELL LOGS

## Rasters • LAS



We've got you covered!

Over 6 million  
North American well logs

1-800-310-6451

[WWW.MJLOGS.COM](http://WWW.MJLOGS.COM)

# Table of Contents

---

## Features

|  |    |
|--|----|
| Demographic Membership Analysis by Rocky Milford | 10 |
|--|----|

## Departments & Columns:

|  |         |
|--|---------|
| KGS Tech Talks                           | 4       |
| President's Letter                       | 7       |
| Advertiser's Directory                   | 8       |
| Professional Directory                   | 15      |
| Kansas Geological Foundation Cornerstone | 18      |
| Exploration Highlights                   | 21 & 22 |
| Kansas Geological Foundation Memorials   | 23      |

## ON THE COVER:

*Bryce Canyon National Park, Utah*

*Photo from web by Luca Galuzzi, 2007*

---

## CALL FOR PAPERS

The Kansas Geological Society Bulletin, which is published bimonthly both in hard-copy and electronic format, seeks short papers dealing with any aspect of Kansas geology, including petroleum geology, studies of producing oil or gas fields, and outcrop or conceptual studies. Maximum printed length of papers is 5 pages as they appear in the Bulletin, including text, references, figures and/or tables, and figure/table captions. Inquiries regarding manuscripts should be sent to [manager@kgslibrary.com](mailto:manager@kgslibrary.com) or mailed to 212 N. Market, Ste. 100, Wichita, KS 67202. Specific guidelines for manuscript submission appear in each issue of the Bulletin, which can also be accessed on-line at the Kansas Geological Society web site at <http://www.kgslibrary.com>

# SOCIETY Technical Meetings

## KGS 2018 Technical Talks

May 01 - *"Real Time Downhole Pressure Tool"* - Paul Simpson Trilobite Testing

May 29 - *"Pressure wave in Arbuckle Formation - OK to KS"* - Frank Mize

No additional technical talks until September

Please remember to check the website for the most up to date information on Technical Talks  
<http://www.kgslibrary.com/techtalks.cfm>

*Tech Talks are held at Landmark Square  
212 N. Market—4th floor  
In the Wisdom Center*



*Note: For those geologists who need 30 points to renew their licenses, there will be a sign-in sheet at each presentation and also a certificate of attendance.*

# KANSAS GEOLOGICAL SOCIETY



## BOARD OF DIRECTORS

---

### PRESIDENT

Beth Isern

### PRESIDENT-ELECT

Wesley Hansen

### SECRETARY

Aaron Young

### TREASURER

Ken Dean

### DIRECTORS

Paul Ramondetta  
Rocky Milford  
Ryan Dixon

### ADVISORS

Tim Hellman  
Debbie Fitzgerald

## COMMITTEE CHAIRMEN

---

### Advertising

Kent Scribner

### Advisory

Tim Hellman

### Annual Banquet

Doug Davis

### Bulletin

Wesley Hansen

### Continuing Education

Dave Clothier

### Distinguished Awards

Paul Ramondetta

### Environmental

Kent Matson

### Field Trip

Jerry Honas

### Fishing Tournament

Randy Teeter

### Future Plans

### Golf

Dave Barker

### Historian

Larry Skelton

### Library

Ted Jochems

### Membership

Larry Friend

### Nomenclature

John H. Morrison, III

### Picnic

Beth Isern

### Public Relations

### Shooting Tournament

Larry Richardson

### Technical Programs

Dave Clothier

### Technical Editor

Ernie Morrison

### Finance Committee

Rocky Milford, Chairman

Members: Tim Hellman, Chuck Brewer, David Doyel, and Tom Funk

## A.A.P.G. DELEGATES

---

Ernie Morrison     Douglas Davis  
2018                    2018

## BULLETIN STAFF

---

### EDITORS

Wes Hansen (316) 772-6188  
Ernie Morrison (Technical Editor) (316) 788-1150

### ADVERTISING

Kent Scribner  
Stelbar Oil Corp. (316) 264-8378

### PROFILES/MEMORIALS

Robert Cowdery

### EXPLORATION HIGHLIGHTS

John H. Morrison, III  
Independent O&G (316) 263-8281

### STATE SURVEY

KS Geological Survey (785) 864-3965

### SOCIETY NEWS

KGS Library (316) 265-8676

### MANAGER

Tammy Nichols-interim manager (316) 265-8676

### EDITOR EMERITUS

Wes Hansen (316) 772-6188  
Larry Richardson (316) 262-8427

## K.G.S. LIBRARY

---

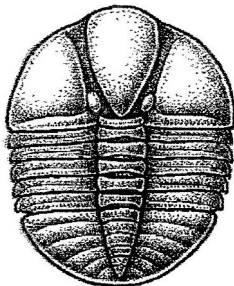
PHONE 316-265-8676 FAX 316-265-1013  
email: [frontdesk@kgslibrary.com](mailto:frontdesk@kgslibrary.com) or  
Web: [www.kgslibrary.com](http://www.kgslibrary.com)

The KGS *Bulletin* is published bi-monthly by the Kansas Geological Society, with offices at 212 North Market, Wichita, Kansas 67202 Copyright 2018, The Kansas Geological Society. The purpose of the *Bulletin* is to keep members informed of the activities of the Society and to encourage the exchange and dissemination of technical information related to the Geological profession. Subscription to the *Bulletin* is by membership in the Kansas Geological Society. Limited permission is hereby given by the KGS to photocopy any material appearing in the KGS *BULLETIN* for the non-commercial purpose of scientific or educational advancement. The KGS, a scientific society, neither adopts nor supports positions of advocacy, we provide this and other forums for the presentation of diverse opinions and positions. Opinions presented in these publications do not reflect official positions of the Society.



Twenty-two Trucks Serving  
Kansas—Colorado—Texas—Nebraska—Illinois

DST's  
Back Pressure testing (G1 & G2)  
Slick line services using the same Weatherford  
Electronic Pressure Gauges used on DST's



1-800-728-5369

FAX 1-785-625-5620

www.trilobitetesting.com  
trilobite@eaglecom.net

SHOPS LOCATED IN:

Hays, KS  
Scott City, KS  
Pratt, KS  
Hugoton, KS  
Oberlin, KS  
Clay City, IL

## CAN YOU NAME THE CRITTER?

Sponsored by Trilobite Testing, Inc.

Is your paleo up to date?

If you know the name of the trilobite,  
submit your guess via e-mail to  
manager@kgslibrary.com

Remember that *Trilobite Testing* is  
sponsoring your efforts, so be sure to thank  
Paul Simpson the next time you see him.

### CONGRATULATIONS!!

**Randy Lilak correctly identified  
The last one as: Harpides**

Bulletin committee members and PhD's in  
Paleontology are prohibited from entering.



### *Kansas Geological Society (KGS) Medallion for Scientific Distinction and Excellence*

The Kansas Geological Society (KGS) Medallion for Scientific Distinction and Excellence may be given annually for peer-recognized, sustained significant scientific contributions to all facets of applied Kansas geology, including work either in Kansas or in surrounding states if the latter contributions pertain directly and significantly to Kansas geology. No more than one award may be given each year, an award does not have to be given every year, and members of the KGS Awards Committee that handle nominations for this award cannot nominate themselves for this award. The candidates need not be active KGS members, and they must be living at the time of selection. The primary consideration in the selection of a candidate shall be his or her sustained, published, significant contributions to any facet of Kansas geology. Contributions may be varied in form such as development of geologic concepts, advancement in discovery thinking, and recognized leadership in exploration concepts. Oral and/or written publications in peer-reviewed geological venues is a requisite criterion for any candidate for this award. The name of a candidate shall be presented by the Awards Committee to the KGS Board of Directors for their approval. Once approved, the recipient shall be presented an appropriate award in the form of a medallion or plaque recommended by the Awards Committee and approved by the Board of Directors at the annual business meeting of the society. This is a new award given by the KGS for distinction and achievement in Geological research in Kansas.

Awards Committee members are Sal Mazzullo, Mike Dealy and Alfred James.

# President's Letter

Society and Library Members,

Thankfully, spring has arrived in Kansas, and summer is right around the corner. Kansas just had it's first 'real' storm of the season the past two days. Also, oil prices are at a four-year high, which is good news as well. I talked to the employees at the Library and they said sales have picked up, rigs are busier, and logging companies once again are needing some advance notice. I am sure other service companies and vendors are also noticing the increase in activity. All good news!

The KGS Board is actively searching to fill the bookkeeper/accountant position for the Library, Society and Foundation. If anybody is interested or knows of somebody looking for that type of position, please contact the Library or any Board member.

The Picnic Committee is planning a late summer get-together, although it will not be called a picnic. We are looking at a couple local breweries, and in the process of narrowing down the choices. It will be held in the latter part of August, so keep your calendar open. Details as to where, when, and what will be coming soon.

The KGS Board is also putting together a 'Young Geologists Group'. Ryan Dixon will be spearheading this group and will soon announce the first meeting. We are thinking young as any geologist 45 years and younger. We have put together some demographics of the membership, and it is apparent, that as a whole, the membership is aging with not enough young graduates and geologists filling the shoes of those that may be retiring in the near future. Hopefully he can gather a group together to get the younger geologists active in the Society, meet each other, and come up with new and inventive ideas. Please contact Ryan at [ryan@dixonenergy.net](mailto:ryan@dixonenergy.net) if you are interested.

The KIOGA Midyear Meeting in McPherson was well attended and the CHS Refinery tour was very interesting. It is mindboggling to think what it takes to get a barrel of oil from the ground, which starts with an idea and a piece of paper or a computer, drilling a well for that barrel of oil, and then producing that well and selling the oil to a refinery to get finished products. Seeing the refinery up close really illustrated what a complex process it all is!! A tour of McPherson College Automotive Restoration facility was also offered and that was extremely interesting. McPherson College stands alone as the only school to provide a bachelor's degree in Automotive Restoration Technology.

I had the privilege of joining Wichita State's Fairmount College Advisory Council on a field trip to Etzanoa, Arkansas City, KS. Wichita State anthropologist Donald Blakeslee discovered the Wichita Indian settlement of Etzanoa, which was discovered near present-day Arkansas City by Spanish explorers in 1602. It is estimated the settlement was home to 20,000 Plains Indians. Just like exploring for oil with new technologies, the world of anthropology also uses complicated and new exploration techniques. His studies, findings and exploration techniques are very much intertwined with the geology of the area. I have asked Dr. Blakeslee to give a presentation this fall for the Society at one of our tech talks.

I hope to see you at the upcoming Kansas Geological Foundation Mixer, May 17<sup>th</sup> at the Petroleum Club. Thank you again for your support to the KGS. As always, contact me or any of the Board members with questions or ideas.

Beth A. Isern



Kansas State University  
**DEPARTMENT OF GEOLOGY**

Graduate education for active professionals in this innovative program, workshops, site visits and distance courses help professionals advance in their careers. Whether your goal is to receive academic credit, certifications or a master's degree in geology, you'll find a path that leads to your career goals.

**CHOOSE FROM SPECIALIZATIONS IN:**

- ▶ Petroleum geology
- ▶ Environmental geochemistry
- ▶ Structural Geology
- ▶ Groundwater
- ▶ Exploration geophysics
- ▶ Geomicrobiology

**LEARN MORE**

Contact Pamela Kempton, department head, for more information at [pkempton@k-state.edu](mailto:pkempton@k-state.edu). Or contact any of our program partners to learn more.

*K-State Global Campus: [dce.k-state.edu](http://dce.k-state.edu)  
 Geology department: [k-state.edu/geology](http://k-state.edu/geology)  
 Graduate School: [k-state.edu/grad](http://k-state.edu/grad)*



**ADVERTISER'S DIRECTORY**

|                                   | <i>page</i> |
|-----------------------------------|-------------|
| Allied Cementing Company, Inc     | 20          |
| Dawson Geophysical Company        | 2           |
| Duke Drilling                     | 20          |
| Kansas Geological Foundation      | 17          |
| Kansas State University           | 8           |
| Lockhart Geophysical              | 20          |
| MJ Systems                        | 2           |
| Murfin Drilling Company, Inc      | 20          |
| PARAGON Geophysical Services, Inc | 2           |
| Professional Directory            | 15          |
| Trilobite Testing                 | 6           |
| Walters Digital Library           | 13          |

Log in to  
 Walters Digital Library  
 At  
[www.kgslibrary.com](http://www.kgslibrary.com)

Log in as our guest  
 and see the Society's Database  
 A convenient way to see what  
 you might want to order!  
 Call or email your order to:  
 316-265-8676  
[frontdesk@kgslibrary.com](mailto:frontdesk@kgslibrary.com)

**ADVERTISER'S RATES: 2018**

| <b>Full Page</b>                       | <b>B&amp;W</b> | <b>Color</b> |
|--|----------------|--------------|
| 6 issues                               | \$2,000        | \$2,500      |
| 3 issues                               | \$1,080        | \$1,325      |
| 1 issue                                | \$480          | \$525        |
| <b>1/2 Page</b>                        |                |              |
| 6 issues                               | \$1,000        | \$1,500      |
| 3 issues                               | \$540          | \$825        |
| 1 issue                                | \$225          | \$350        |
| <b>1/4 Page</b>                        |                |              |
| 6 issues                               | \$600          | \$900        |
| 3 issues                               | \$325          | \$525        |
| 1 issue                                | \$150          | \$250        |
| <b>1/8 Page</b>                        |                |              |
| 6 issues                               | \$300          | \$500        |
| 3 issues                               | \$175          | \$325        |
| 1 issue                                | \$75           | \$185        |
| <b>Professional Ad (Business Card)</b> |                |              |
| 6 issues                               | \$90           | \$180        |

*For one-time ads, call Kent Scribner at 316-264-8378*



# KGS Annual Golf Tournament

July 16, 2018

Rolling Hills CC Wichita

Details to follow in July/August issue

---

---

## Robert F. Walters Digital Library

**Log in as our Guest**

**username: guest**

**password: guest**

**316-265-8676**



Let Us Print Your *Geo Reports*  
And Save Your Time For Finding More Oil & Gas

Top Quality Color Printing For Our Membership

Email your files to: [kgsorders@gmail.com](mailto:kgsorders@gmail.com)

# An Demographic Analysis of the KGS Membership\

By Rocky Milford

Using data supplied by both Janice Bright, former bookkeeper, and Tammy Nichols, interim manager, the following information was gleaned showing the present age distribution and membership status in the Society, KGS paper library, and WDL.

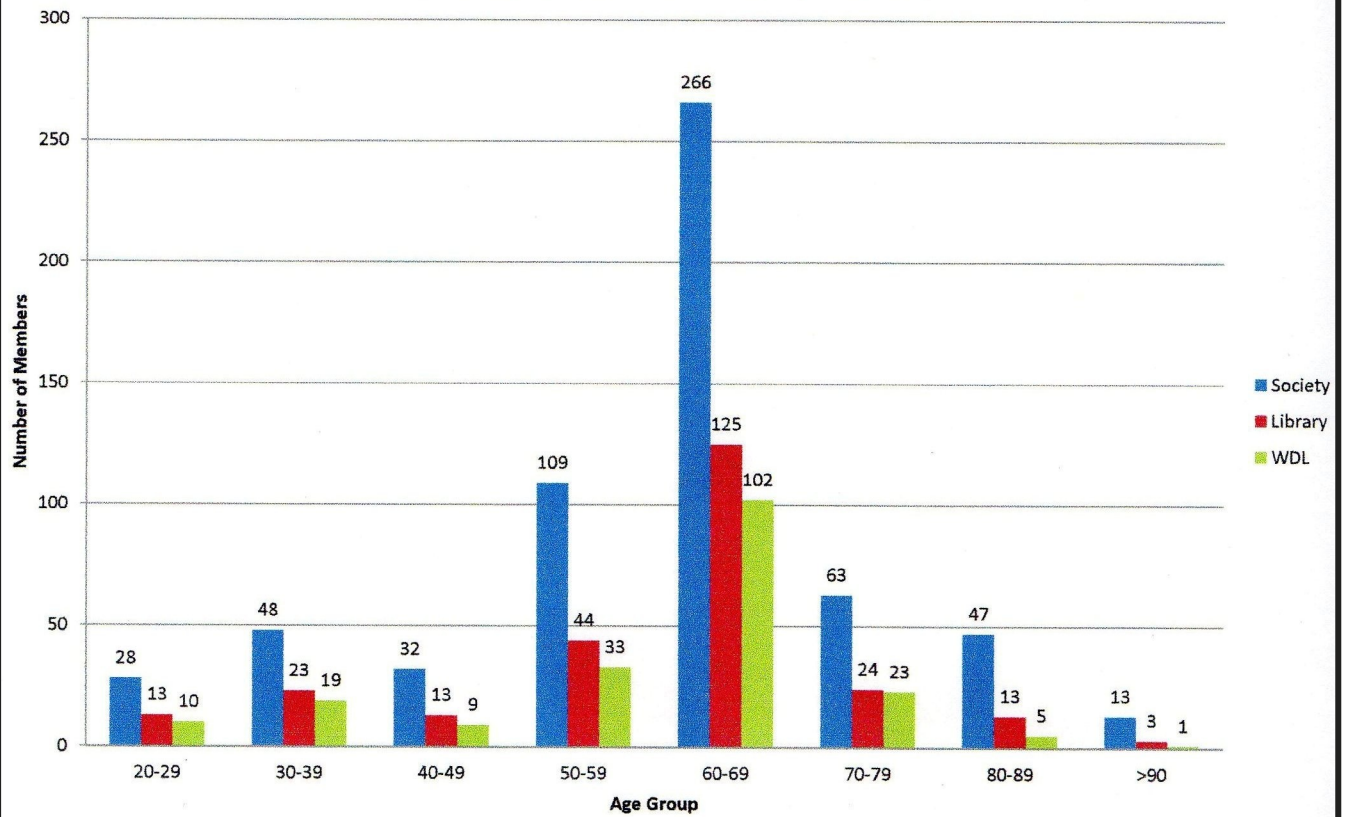
- There are 619 members in the data but one is noted as “Deceased” and I eliminated him, which brings the Membership down to 618.
- 12 members had to be eliminated for the Age analysis because there was not a Date Of Birth associated with them, which lowers the Membership down to **606** for the Age analysis.
- One member is listed as an Active Member of the Society but has not and does not pay his dues but has a Library Membership. Tammy warned me about this and said that he doesn’t buy a Society Membership and apparently his company pays for the Library Membership.
- Of the 618 Members, 260 (42%) have a Library Membership and only two could not be used in the Age analysis.
- Of the 618 Members, 204 (33%) have a WDL Membership and only two could not be used in the Age analysis.
- There are 7 people that do not have a Library Membership but do have a WDL Membership. 5 are Supporting Members, 1 is an Associate Member and 1 is an Active Member but is not shown to have a Library Membership.
- Of the 618 Members, 351 (57%) only have a Society Membership and do not have either a Library or WDL Membership.

## Society Membership by Age Group as of January 25, 2018

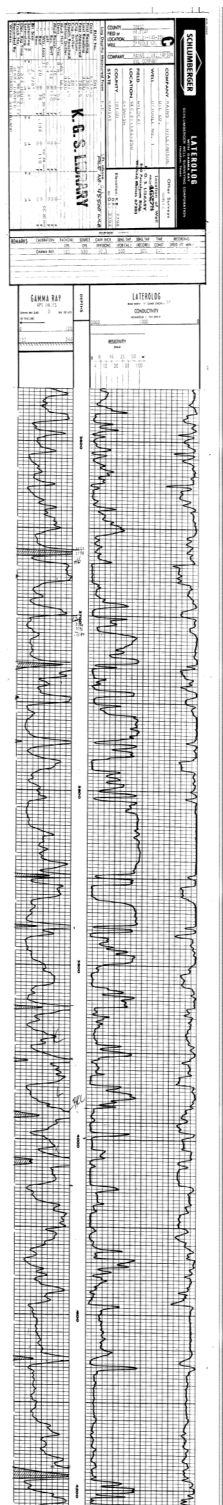
Age calculated from January 25, 2018

606 of 618 members used in chart (12 with no birth dates)

Age Average is 61, Age Median is 62, Age Mode is 62



*The KGS Library is pleased to  
announce a new service*



Creating  
LAS files  
from our logs  
or yours

**\$20.00 per  
curve!!**

Quick  
turn-around

Send us your log file  
or tell us which of  
ours you would like  
converted.

**316-265-8676**

The Kansas Geological Society maintains its ownership  
and copyright when converting library log files to LAS

**We Invite You  
To join**

***Kansas  
Geological  
Foundation***

*\$50.00 membership is  
tax deductible*

*Call 316-265-8676*

*Or send checks to:  
Kansas Geological Foundation  
212 N. Market, Ste. 100  
Wichita, KS 67202*

**BULLETIN CONTENT POLICY**

Effective January 1, 2018, only ads for service companies and geologists offering their services will be permitted in the KGS Bulletin. Furthermore, only content of geologic interest or official KGS functions (technical talks, annual banquet, golf tourney, picnic etc.) will be permitted in this bulletin. This policy is in keeping with maintaining a professional standard for this publication. Any interpretation of this policy rests solely with the editor of this bulletin.



UNIVERSITY OF KANSAS STATE OF KANSAS  
 Franklin D. Murphy, M.D., Chancellor George Docking, Governor

MINERAL INDUSTRIES COUNCIL  
 R. O. Weaver (77), Chairman Brian O'Brien (79), Vice Chairman  
 R. A. Spencer (77) E. J. Jurgensen (75)  
 W. L. Stryker (77) George K. Mackin, Jr. (79)  
 Howard Casey (81) Charles Cook (60)  
 Simon S. Clarke (81) Don Hansen (60)  
 Lee H. Cornell (81) Joe E. Donham (60)

STATE GEOLOGICAL SURVEY  
 Frank C. Foley, Ph.D., State Geologist and Director  
 William W. Hamblen, Ph.D., Assistant State Geologist  
 and Assistant Director  
 Raymond C. Moore, Ph.D., S.D., Principal Geologist

STATE BOARD OF AGENTS  
 A. W. Hensberger, Chairman  
 Merrill Boyd  
 Claude C. Brasley  
 Ray Evans  
 Clement H. Hill  
 Mrs. Leo Hughey  
 Lawrence Morgan  
 Omer Stadler  
 Harry Valentine

# THE SURFACE FEATURES OF KANSAS

By RAYMOND C. MOORE

**Get Your Maps copied at the KGS library**  
**We can scan, copy, and print up to 44" wide**  
**Color or Black & White**  
**Solid Color @ \$4.00/sq. ft.**  
**Line maps with color @ \$3.00/sq. ft.**

## AAPG Section Meeting Updates

Rocky Mountain May 20-22 Salt Lake City, UT  
 Gulf Coast Sept. 30-Oct. 2 Shreveport, LA  
 Eastern Oct. 7-11 Pittsburg, PA

## AAPG ACE 2018

### Salt Lake City, Utah

May 20-23, 2018

## Robert F. Walters Digital Library

The most complete source for Kansas data  
 Database updated nightly

Day or Night  
 You can get to the data as you need it

[www.kgslibrary.com](http://www.kgslibrary.com)  
 To Join: call 316-265-8676



It's time for



KANSAS GEOLOGICAL FOUNDATION'S  
**23rd ANNUAL SPRING MIXER**

**Thursday, May 17, 2018**

**4:30 PM—8:00 PM**

**Where?**

**Petroleum Club of Wichita**

**9th Floor of the Bank of America Building  
Broadway & Douglas**

**Casual Dress**

**Free Beer, Wine, Soda & Hors D'oeuvres until 8:00 PM**

**Come Join In the Fun, Food & Libations!**

**Everyone is welcome !!!!!**

**You don't have to be a member of the Foundation or the Society  
or even a geologist to attend!**

**Please join us on Thursday, May 17, 2018**

**Special Presentation by Palomino Petroleum  
On the recent advancements in horizontal drilling in Kansas**

**We welcome sponsorships for this event**

**Call: 316-265-8676 to donate**

**KGF, a tax-exempt 501(c)3 organization**



# PROFESSIONAL DIRECTORY

**Kirk Rundle**  
**Consulting Geophysicist**

3D Seismic Design, Acquisition to Processing QC.,  
 Interpretation and Analysis, Subsurface Integration  
 7340 W. 21st. N., Ste. 100  
 Wichita, Kansas 67205


Office: 316-721-1421 Fax: 316-721-1843  
 Email: kirk@rundlegeo.com

**Covey The Well Watchers**  
*One Thousand Wells and Counting"*

**Curtis E. Covey Wellsite Petroleum Geologist**

Gas Trailer Cell: 316-217-4679 Office: 316-776-0367  
 Email: wellsitgeol@gmail.com 6548 Bedford Circle  
 Derby, Kansas 67037

*Gas Detection Trailer & Internet/Phone Communications*



**Banks Resources**

**Scott Banks**  
 Petroleum Geologist  
 banksb@aol.com  
 Cell: 316.253.8550

1700 N. Waterfront Pkwy.  
 Bldg. 300 • Suite C  
 Wichita, KS 67206

Phone: 316.558.5262  
 Fax: 316.558.5263

**WESLEY D. HANSEN**  
**Consulting Geologist**

Well site Supervision • Geologic Studies  
 212 N. Market, Ste 257  
 Wichita, Kansas 67202  
 Office/Mobile: ( 316) 772-6188  
 whansen4651@sbcglobal.net  
 37 Continuous Years in the Kansas Oil Patch

**ROGER L. MARTIN**  
*Independent Petroleum Geologist*

200 E 1st St, Ste 405, Wichita, KS 67202

Cell: 316-833-2722 Office: 316-250-6970  
 KS Field Cell: 316-655-1227  
 Fax: 316-425-3829  
 Email: rogermartingeo@yahoo.com

**ALFRED JAMES III**  
**Petroleum Geologist**  
 Kansas - Colorado - Utah

4912 E. 29th St. N., Ste. 3, Wichita, Kansas 67220

SIPES # 1111  
 Office (316) 267-7592  
 james.alfred21@yahoo.com

**M. (Brad)ford Rine, Geologist**

*Licensed, Registered, Certified*

|                      |                         |
|----------------------|-------------------------|
| PROSPECT EVALUATION  | PROSPECT ORIENTATION    |
| WELLSITE SUPERVISION | DRLG/COMPL CONSULTATION |
| RESERVOIR STUDIES    | PROPERTY EVALUATION     |
| EXPERT TESTIMONY     | BANJO PICKER            |

100 South Main  
 Suite #415  
 Wichita, Kansas 67202

Email: rinemb@sbcglobal.net  
 Office & Cell: (316) 250-5941

**DeGood Geological Services**

**Alan DeGood**  
 Kansas Licensed Geologist #330

1233 Autumn Drive  
 Goddard, KS 67052

Prospect Reviews  
 Reserve Studies  
 Rendition Preparation

Phone: 620-242-6301  
 Home: 316-794-8391

Email: degood1@live.com

**MELLAND ENGINEERING, INC.**  
*Petroleum Engineering & Geological Consulting*

**James E. Melland, P.E., P.G.**  
 President

Office: (620) 241-4621 Fax: (620) 241-2621

jamesm@mellandengineering.com  
 www.mellandengineering.com

P.O. Box 841, McPherson, KS 67460

Your business card ad  
 Could be right here  
 For only \$90/year

Your business card ad  
 Could be right here  
 For only \$90/year

Your business card ad  
 Could be right here  
 For only \$90/year

## Kansas Geological Foundation Video / DVD Collection

The KGF has an extensive collection of videos available for check-out at no charge.

Only pay for shipping back.

These are ideal for classroom or general public viewing.

See the web for titles & descriptions  
[www.kgfoundation.org](http://www.kgfoundation.org)

Call 316-265-8676

Ask for Janice to check out videos

## We Invite You To join

### *Kansas Geological Foundation*

*\$50.00 membership is  
tax deductible*

*Call 316-265-8676*

*Or send checks to:  
Kansas Geological Foundation  
212 N. Market, Ste. 100  
Wichita, KS 67202*

### **NOTICE!!!!**

#### **WSU GEOLOGY CLUB & Papa John's Pizza**

Papa John's offered WSU student organizations an opportunity to raise monies for their organizations.

The **WSU Geology Club** is participating  
And **YOU** can help them!

When ordering pizza from Papa John's,  
Use this code: **WSU004**  
(those are zero's, not letter O)

With this code, the customer will receive 40% off their entire online order and WSU's AAPG Student Chapter will receive 10% of the money spent on the order.

**Eating pizza tonight?  
Let's help WSU Geology Club!**

Monies raised will be used towards gas money to travel to local schools when they promote the geosciences to grade schools, registration costs for workshops, seminars and AAPG Student Expos, and social and academic events like an upcoming "Lunch and Learn" series next fall.

### **The Following Are For Sale**

*Kansas Completion Cards:*  
Several sets (call for more information)

*Oklahoma Completion Cards*

*New Mexico Completion Cards*

*North Dakota Completion Cards*

*Utah Completion Cards*

*Microfiche Electric Logs*

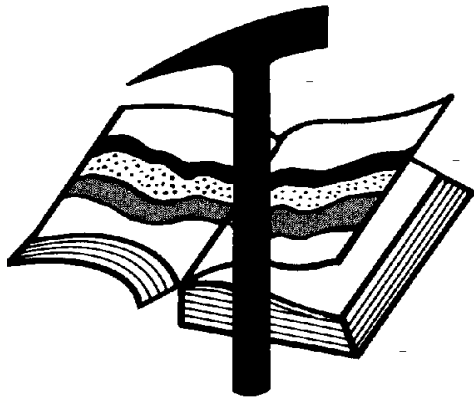
*Kansas  
Oklahoma  
Texas*

### **Geological Office Furniture:**

- 8-drawer completion card cabinets
- 7-drawer cabinets
- Map cabinets—metal—2 available
- Map racks—different sizes

**Call: 316-265-8676**  
**Ask for Ted**





# Kansas Geological Foundation

*Web Site: [www.kgfoundation.org](http://www.kgfoundation.org)*

**212 North Market  
Wichita, Kansas 67202**

A not-for-profit educational and scientific corporation

## **GOALS:**

- promote geology and earth science
- preserve geological records
- establish memorials and endowments
- support field trips and seminars
- financial aid and grants to students

**PLEASE HELP SUPPORT THE FOUNDATION**

## **Kansas Geological Foundation Services**

The Kansas Geological Foundation provides the following services as a part of the organization's commitment to educate the public regarding earth science.

### **Speaker's Bureau**

A list of speakers available to talk about various aspects of geology may be obtained by contacting Janice Bright at the KGS Library, 265-8676. This service is free to the public.

### **DVD/Videotape Library**

The KGF maintains a DVD & videotape library focused primarily on the various fields of earth science. These tapes may be checked out without charge by the public. To obtain a list of tapes, please contact the KGS Library, 212 N. Market, Ste. 100, Wichita, KS 67202, or call Janice Bright at 265-8676.

The Kansas Geological Foundation was founded in March, 1989 as a not-for-profit corporation under the guidelines of section 501(c)(3) of the tax code to provide individuals and corporations the opportunity to further the science of geology. It is dedicated to providing charitable, scientific, literary and educational opportunities in the field of geology for the professional geologist as well as the general public.

KGF can receive in-kind donations through which the donor may receive a tax deduction. Of equal importance, the KGF provides the financial resources to sort, process and file this data at the KGS library. If you have a donation to make, please contact the KGF at 265-8676.

Your tax-deductible membership donation helps to defray the cost of processing donations and to support public education programs about the science of geology. Annual membership begins at \$50.00 per year. Donations of \$100.00 or more are encouraged through the following clubs:

|                         |                  |
|-------------------------|------------------|
| <b>Century Club</b>     | \$ 100 to \$ 499 |
| <b>\$500 Club</b>       | \$ 500 to \$ 999 |
| <b>Millennium Club</b>  | \$1000 to \$5000 |
| <b>President's Club</b> | \$5000 and over  |

# *Kansas Geological Foundation*

## *Cornerstone*

### *Kansas Geological Foundation News*

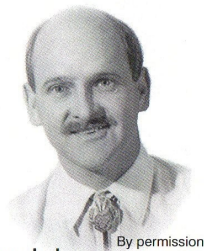
#### Spring 2018 Scholarship Recipients

|                  |                          |                               |       |
|------------------|--------------------------|-------------------------------|-------|
| Ryan Keast       | Kansas State University  | (Knighton Family Scholarship) | \$500 |
| Nin Atae         | Kansas State University  | (Bob Cowdery Scholarship)     | \$500 |
| Mikaela Rader    | Kansas State University  | (Bob Cowdery Scholarship)     | \$500 |
| Trevor Spencer   | Kansas State University  | KGF Scholarship               | \$500 |
| William Swanson  | Wichita State University | KGF Scholarship               | \$500 |
| Andrew Banks     | University of Kansas     | KGF Scholarship               | \$500 |
| Chantelle Davis  | University of Kansas     | KGF Scholarship               | \$500 |
| Jeffery Jennings | University of Kansas     | KGF Scholarship               | \$500 |
| Mathew Kramer    | University of Kansas     | KGF Scholarship               | \$500 |
| Ajay Pradhan     | University of Kansas     | KGF Scholarship               | \$500 |

#### Grant Request Recipients

|   |          |
|---|----------|
| Andrew Swindle - “ <i>Ninnescah Field Station Hydrogeologic Assessment</i> ”  | \$727.25 |
| Rogers Clark Caldwell Buntin - “ <i>Evaluating the Ichnofossil Teredolites as an indicator of Salinity and Paleoenvironment in the geologic record. Examples from Cretaceous strata: Kansas, Colorado and Utah.</i> ” | \$500.00 |
| Christina Richardson - “ <i>Effect of Local Soil on Microbial Communities on Aquifer Microbial Communities and Geochemical Environments</i> ”   | \$500.00 |

### **The Kansas Geological Foundation Needs You!**



The KGF provides the financial resources to sort, process and file, in-kind donations of geological data at the KGS library. Due in large part to the KGF this unique and rare well of information is being made available to all. Please consider telling your company management and colleagues about the benefits of a library that continues expanding in part because of the KGF.

**We very much value and need your financial support.**

#### KGF Officers and Board Members

**President- Larry Richardson**  
**Vice President - Dennis Hedke**  
**Treasurer - Bryce Bidleman**  
**Secretary - Larry Friend**

#### Board Members

**Ernie Morrison**  
**Marc Summerville (Grants)**  
**Brian Fisher (Membership)**  
**Ken Leblanc**  
**Ken Wallace**

---

**Scholarships - Maurice Korphage**  
**Publicity - Wes Hansen**

# *Kansas Geological Foundation News*

Students: The KGF awards scholarships each December and May. Check with your department chairs for applications. You must submit complete applications by the deadline.

**Scholarship Applications for the Fall semester will be due by May 1, 2018.**

Grants to help with research on Kansas related geology are also considered for aid.

**"From 2011 through 2017, the integration project compared 150,046 donated well logs to Walters Digital Library (WDL). Of these, 48,819 (32.5%) were not in WDL and were subsequently added to library holdings. Additionally, 1,784 donated logs were re-scanned to replace poor digital images."**

**"In the first three months of 2018, 792 (13.0%) new logs were added to WDL with 223 re-scans."**

**"Recent donations of data include Pioneer Energy Services of Hays (35 cabinets full of logs, including Subterranean logs), Fred James and LaVeta Oil of Stafford. The Kansas Geological Society donated more than \$22,000 to pay the integrators. Thank you to our generous donors." ( from Ted Jochems, Thanks Ted)**

---

Currently, the Foundation has four students working on well log integration: Kyle Lawson, Helen Cruz, Shuyao Li (a.k.a. Emily) and David Bruce. They work between ten and thirty hours per week. More than a dozen other part-time integrators have worked on the project since 2010.

---

## **Is it Time for the KGS Bulletin to go Only Digital?**

**The readers of the KGS Bulletin have no doubt noticed the gradual decrease in advertising in our society bulletin. We just lost another 1/2 page color ad for this issue with another 1/2 page color ad possibly canceling as well. The costs for printing and mailing the bulletin far exceed the ad revenue. Currently, one can view the bulletin online from the Kansas Geological Society website and print from one's own computer.**

**One concern expressed to me is that some members may not be able to receive a pdf of the bulletin in their email program due to the file size. I'll try to get some more information regarding this issue from some members.**

**Express your concerns to me at [whansen4651@sbcglobal.net](mailto:whansen4651@sbcglobal.net)**

**Thanks,  
Wesley D. Hansen, editor**

**12 Drilling Rigs**  
**To depth of 8,500 ft.**



**WESTERN KANSAS**  
**SOUTHERN NEBRASKA**  
**EASTERN COLORADO**

For contract information contact:  
**Will Murfin**  
**Drilling Manager**

**316-258-8888 (Direct)**  
**316-267-3241 (Main)**

**250 N. Water, Ste. 300**  
**Wichita, KS 67202**

**DRILLING COMPANY**

**ROTARY DRILLING CONTRACTOR**

620 Hubbard PO Box 823  
 Great Bend, KS 67530  
 Phone 620-793-8366

100 S. Main, Ste. 410,  
 Wichita, KS 67202  
 Phone 316-267-1331  
 Fax 316-267-5180

**2D & 3D Vibroseis Acquisition**  
**ARAM\*AIRES Seismic Recording System**

1600 Broadway, Suite 1660 • Denver, CO 80202-4915  
 (303) 592-5220 • info@lockhartgeo.com  
 for complete information go to: www.lockhartgeo.com

Great Bend (620) 793-5861      Ness City (785) 798-3843      Medicine Lodge (620) 886-5926

**GREAT BEND 793-5861    NESS CITY 798-3843**  
**MEDICINE LODGE 886-5926**

**Russell (785) 483-2627      Oakley (785) 672-3452**

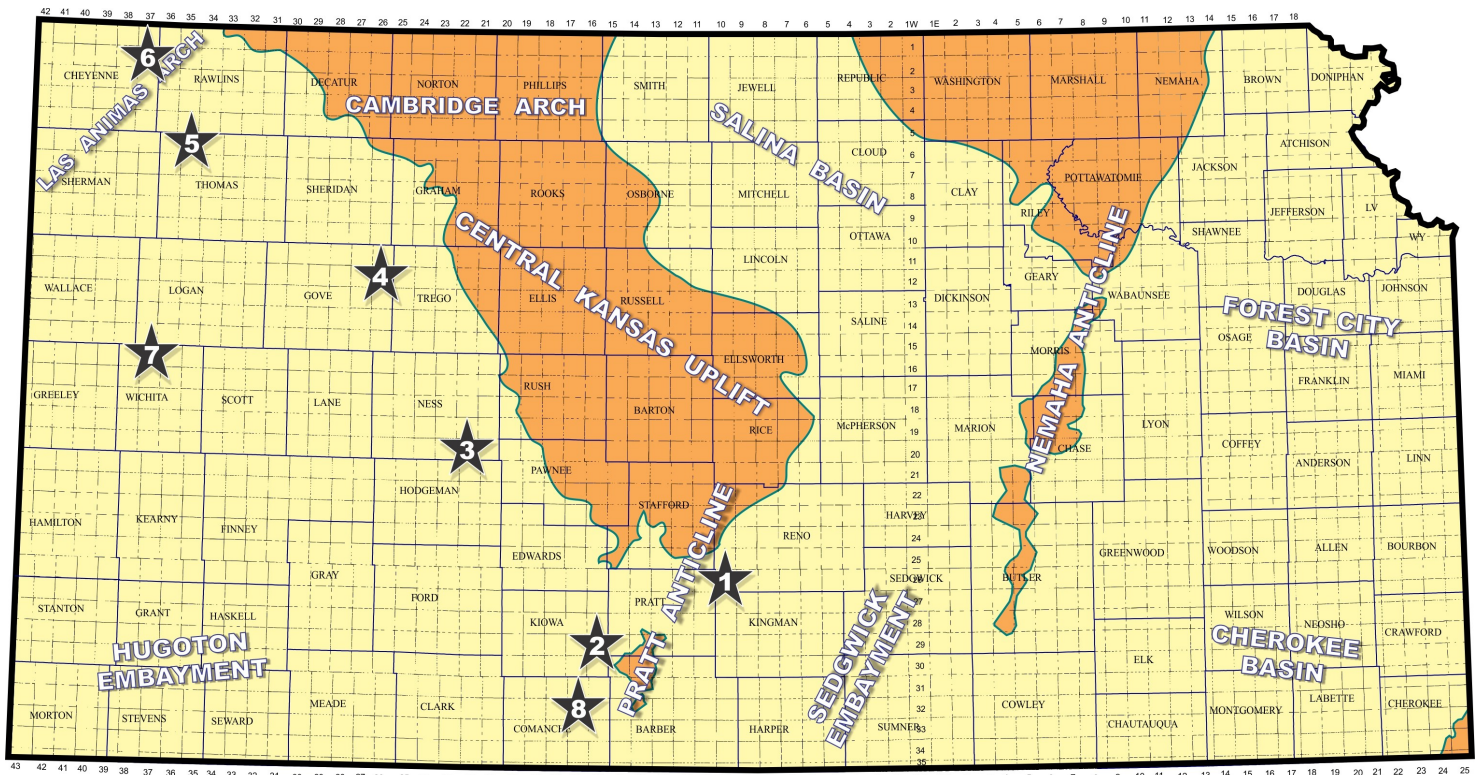
**AAPG Needs You!**  
**Professional geoscientists, share your world!**

The Mid Continent Section has **17 AAPG Student Chapters**, but only **3 Visiting Geoscientists**...which makes it almost impossible to have a professional geoscientist visit to each school at least once a year or even once every two years. The aim of AAPG's program is to give students a flavor of a professional life in energy resources. It also hopes to encourage dialog between industry and academia.

To be a Visiting Geoscientist bearing the AAPG flag, you are asked to have at least 5 years of experience and make at least one visit per year to a university. It can be a school with an AAPG Student Chapter, or a college/university without one. Your choice.

The Mid Continent schools with Student Chapters are: Missouri University, Fort Hays State University, Iowa State University, Kansas State University, Missouri State University, University of Nebraska, Northwest Missouri State University, Oklahoma State University, University of Oklahoma, University of Arkansas, University of Iowa, University of Kansas, University of Missouri, Columbia University of Tulsa and Wichita State University.

Contact Robbie Gries, co-Chair VGP committee, Denver, if you are interested in learning more. rrgries@aol.com



Map courtesy of Marc Summerville

1. Unit Petroleum Company, Tulsa (OK), is pumping 40 bbls oil and 1,600 bbls water per day at the 1-H-XL Geesling (16) horizontal well in Reno County. The well was drilled at surface location 780' FNL & 1020' FEL of section 16- T26s- R10W, about one and one-half miles southeast of the town of Turon. Bottom hole location is approximately 330' FSL & 1020' FEL in section 21-26S-10W. Perforations extended from 4498 to 5750 ft measured depth overall. The new Geesling oil field is situated nearly three miles southeast of the Turon Field (1993), which also produced oil from the Mississippian formation.
2. Lotus Operating Company LLC, Wichita (KS), has successfully completed its #1 Ron Piester (API 15-097-21828) new pool discovery well in the SW/4 of section 14- T29s- R16W, Kiowa County. The wildcat well is producing 55 bbls of oil, 150 bbls of water and 10,000 cu ft of natural gas daily at site located about four miles north and two miles east of the town of Belvidere, Kansas. Production comes from Mississippian perforations placed between 4660 to 4695 ft. Pay zone was acidized and fracture treated. Duke Drilling's Rig #2 bottomed the well at a total depth of 4998 ft. The new Soldier Creek Northwest oil field lies over three-quarters mile west of established Soldier Creek Field, which has produced nearly 214,000 bbls of oil from the Cherokee and Mississippian zones.
3. American Warrior, Inc., Garden City (KS), has established a new oil-producing area in Ness County, The #1-23 Brad (API 15-135-25987), spotted in the SW/4 of section 23- T20s- R22W, is producing an undisclosed amount of crude from the Mississippian formation. Operator contracted with Discovery Drilling's Rig #4 to drill the well to a total depth of 4399 ft. Site of the new discovery is located nearly three-quarters

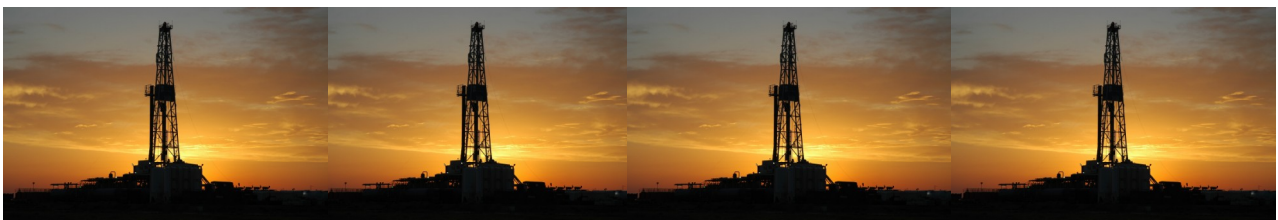
mile southwest of the Bondurant Field, where the Mississippian formation has given up over 395,000 bbls of crude since 1966. American Warrior's new Bondurant Southwest pool discovery lies about ten miles south and two miles west of Bazine, Kansas.

4. Carmen Schmitt, Great Bend (KS), has discovered new Lansing - Kansas City (LKC) oil reserves at a remote wildcat site located over four miles from established LKC production in the Lahman Field (1983). The #1-31 Polifka (API 15-063-22315) was drilled to a total depth of 4550 ft by Southwind Drilling tools at site in the SE/4 of section 31- T12s- R26W. Brito Oil Company, Inc., Wichita (KS), originally operated the well to total depth before turning completion operations over to Carmen Schmitt. Completion details are currently being held confidential at the present time. The new Eagle Ridge oil field is situated about seven miles south of Quinter, Kansas.

5. Brito Oil Company, Inc., Wichita (KS), has completed the #1-10 Cook (API 15-193-21001) in the NE/4 of section 10- T6s- R35W, in Thomas County. The wildcat well is producing an unknown amount of crude at site over one mile east of the established Nickel North Field. Unconfirmed reports indicate possible Mississippian production is in play. Completion details remain confidential. Most of the surrounding oil fields in the area produce Cherokee and Marmaton oil. The #1-10 Cook was drilled to a total depth of 4800 ft. Field area is located about ten miles north and seven miles west of Colby, Kansas. The new field has been named Nickel Northeast.

6. Murfin Drilling Company, Inc., Wichita (KS), has stepped-out over one mile southwest of multiple zone oil production in the recently revived Ken Field in Cheyenne County to establish a new unnamed oil field. The #1-20 Culwell `G` (API 15-023-21472), located in the NW/4 of section 20- T2s- R37W, is producing an undisclosed amount of crude from the Lansing - Kansas city formation. Completion details are confidential. Total depth was reached at 5100 ft. The Ken Field produced Cherokee oil from 1959-1961 and was revived by Murfin in 2016 with Lansing - Kansas City production. Marmaton oil was later discovered by Murfin in the field in 2017. Murfin's new Culwell pool discovery lies about eight miles north and one and two miles east of Bird City, Kansas.

7. Mull Drilling Company, Inc., Wichita (KS), has a new Marmaton oil discovery in Wichita County, in West-Central Kansas. The 1-3 Redding (API 15-203-20325), spotted in the NW NE of section 3- T16s- R37W, was drilled to a total depth of 4980 ft approximately fourteen miles north and one mile west of the town of Leoti. The wildcat well discovered the oil deposits over four miles southwest of closest known production in the Twin Butte Field (2017), which also produced oil from the Marmaton. The new oil field has been named Redding.



# Kansas Geological Foundation Memorials

| KGS Member              | Date Deceased | Memorial Est. | KGS Member                 | Date Deceased | Memorial Est. |
|-------------------------|---------------|---------------|----------------------------|---------------|---------------|
| Dan Bowles              | 09/89         | 1990          | Claud Sheats               | 02/02         | 2002          |
| John Brewer             | 10/89         | 1990          | Merle Britting             | 2002          | 2002          |
| George Bruce            | 08/89         | 1990          | Harold Trapp               | 11/02         | 2002          |
| Robert Gebhart          | 01/90         | 1990          | Donald M. Brown            | 11/02         | 2003          |
| Ray Anderson, Jr.       | 11/90         | 1990          | Elwyn Nagel                | 03/03         | 2003          |
| Harold McNeil           | 03/91         | 1991          | Robert Noll                | 09/03         | 2003          |
| Millard W. Smith        | 08/91         | 1991          | Benny Singleton            | 09/03         | 2003          |
| Clinton Engstrand       | 09/91         | 1991          | Jay Dirks                  | 2003          | 2003          |
| M.F. "Ted" Bear         | 10/91         | 1991          | J. Mark Richardson         | 02/04         | 2004          |
| James & Kathryn Gould   | 11/91         | 1991          | John "Jack" Barwick        | 02/01         | 2004          |
| E. Gail Carpenter       | 06/91         | 1993          | Richard Roby               | 03/04         | 2004          |
| Benton Brooks           | 09/92         | 1992          | Ruth Bell Steinberg        | 2004          | 2004          |
| Robert C. Armstrong     | 01/93         | 1993          | Gordon Keen                | 03/04         | 2004          |
| Nancy Lorenz            | 02/93         | 1993          | Lloyd Tarrant              | 05/04         | 2004          |
| Norman R. Stewart       | 07/93         | 1993          | Robert J. "Rob" Dietterich | 08/96         | 2004          |
| Robert W. Watchous      | 12/93         | 1993          | Mervyn Mace                | 12/04         | 2004          |
| J. George Klein         | 07/94         | 1994          | Donald Hoy Smith           | 04/05         | 2005          |
| Harold C.J. Terhune     | 01/95         | 1995          | Richard M. Foley           | 06/05         | 2005          |
| Carl Todd               | 01/95         | 1995          | Wayne Brinegar             | 06/05         | 2005          |
| Don R. Pate             | 03/95         | 1995          | Charles B. Moore           | 09/96         | 2005          |
| R. James Gear           | 05/95         | 1995          | Jack Heathman              | 05/06         | 2006          |
| Vernon Hess             | 06/95         | 1995          | Charles Kaiser             | 09/06         | 2006          |
| E. K. Edmiston          | 06/95         | 1995          | Rod Sweetman               | 08/06         | 2006          |
| Jack Rine               | 07/95         | 1995          | Karl Becker                | 10/06         | 2006          |
| Lee Cornell             | 08/95         | 1995          | Frank Hamlin               | 10/06         | 2006          |
| John Graves             | 10/95         | 1995          | Marvin Douglas             | 12/06         | 2006          |
| Wilson Rains            | 10/95         | 1995          | Robert W. Hammond          | 04/07         | 2007          |
| Heber Beardmore, Jr.    | 09/96         | 1996          | Eldon Frazey               | 04/07         | 2007          |
| Elmer "Lucky" Opfer     | 12/96         | 1996          | Pete Amstutz               | 05/07         | 2007          |
| Raymond M. Goodin       | 01/97         | 1997          | Charles Spradlin           | 05/07         | 2007          |
| Donald F. Moore         | 10/92         | 1997          | Donald R. "Bob" Douglass   | 09/07         | 2007          |
| Gerald J. Kathol        | 03/97         | 1997          | Vincent Hiebsch            | 11/07         | 2007          |
| James D. Davies         | 08/88         | 1997          | Glen C. Thrasher           | 03/08         | 2008          |
| R. Kenneth Smith        | 04/97         | 1997          | Peg Walters                | 06/08         | 2008          |
| Robert L. Dilts         | 05/97         | 1997          | Theodore "Ted" Sandberg    | 07/08         | 2008          |
| Delmer L. Powers        | 06/72         | 1997          | James Ralstin              | 11/08         | 2008          |
| Gene Falkowski          | 11/97         | 1997          | Earl Brandt                | 04/09         | 2009          |
| Arthur (Bill) Jacques   | 01/98         | 1998          | Walter DeLozier            | 05/09         | 2009          |
| Bus Woods               | 01/98         | 1998          | Don D. Strong              | 01/10         | 2010          |
| Frank M. Brooks         | 03/98         | 1998          | John Stone                 | 02/10         | 2010          |
| Robert F. Walters       | 04/98         | 1998          | Craig Caulk                | 03/10         | 2010          |
| Stephen Powell          | 04/98         | 1998          | Joseph E. Moreland, Jr.    | 03/10         | 2010          |
| Deane Jirrels           | 05/98         | 1998          | Gene Garmon                | 03/10         | 2010          |
| William G. Iversen      | 07/98         | 1998          | James F. Dilts             | 05/10         | 2010          |
| Ann E. Watchous         | 08/98         | 1998          | Jerry Pike                 | 05/10         | 2010          |
| W.R. "Bill" Murfin      | 09/98         | 1998          | Donald Hollar              | 06/10         | 2010          |
| Donald L. Hellar        | 11/98         | 1998          | Delbert Costa              | 08/10         | 2010          |
| Joseph E. Rakaskas      | 01/99         | 1999          | John Tanner                | 08/10         | 2010          |
| Charles W. Steincamp    | 02/99         | 1999          | William (Bill) Owen        | 09/10         | 2010          |
| Robert and Betty Glover | 10/96         | 1998          | Harold (Hal) Brown         | 10/10         | 2010          |
| Howard E. Schwerdtfeger | 11/98         | 1999          | Edmund G. Lorenz           | 11/10         | 2010          |
| W. W. "Brick" Wakefield | 03/99         | 1999          | Thomas E. Black            | 05/11         | 2011          |
| V. Richard Hoover       | 01/00         | 2000          | Wayne E. Walcher           | 07/11         | 2011          |
| Warren E. Tomlinson     | 01/00         | 2000          | Henry F. Filson            | 07/11         | 2011          |
| James A. Morris         | 01/00         | 2000          | Thomas Ray                 | 07/11         | 2011          |
| Eric H. Jager           | 03/00         | 2000          | Edgar E. Smith             | 09/11         | 2012          |
| Kenneth W. Johnson      | 03/00         | 2000          | Marilyn Messenger          | 06/13         | 2013          |
| Dean C. Schaake         | 03/00         | 2000          | Micheal Mitchell           | 09/13         | 2013          |
| Fred S. Lillibridge     | 05/00         | 2000          | Orvie Howell               | 11/13         | 2013          |
| Jerry A. Langrehr       | 07/00         | 2000          | James Thompson             | 11/13         | 2013          |
| Clark A. Roach          | 07/00         | 2000          | Dick Rowland               | 09/13         | 2014          |
| Floyd W. "Bud" Mallonee | 10/00         | 2000          | Robbie Thompson            | 12/13         | 2014          |
| Ralph W. Ruuwe          | 09/00         | 2000          | Kris Kennedy               | 04/14         | 2015          |
| Robert L. Slamal        | 02/01         | 2001          | Annette Hedke              | 02/15         | 2015          |
| Jerold E. Jespersen     | 06/01         | 2001          | James Devlin               | 04/15         | 2015          |
| William A. Sladek       | 06/01         | 2001          | Robert Gensch              | 09/15         | 2015          |
| Harlan B. Dixon         | 06/01         | 2001          | Jerald Rains               | 05/16         | 2016          |
| Edward B. Donnelly      | 08/01         | 2001          | Max Houston                | 05/16         | 2016          |
| Richard P. Nixon        | 02/02         | 2002          | Robert "Gus" Messenger     | 01/17         | 2017          |
| Robert W. Frensley      | 12/01         | 2002          | Jimmy Wayne Gowens         | 04/17         | 2017          |
| Gerald W. Zorger        | 01/02         | 2002          | Walter H. Martz Jr.        | 01/18         | 2018          |
| Don L. Calvin           | 03/02         | 2002          |                            |               |               |

**CHANGE SERVICE REQUESTED**

KGS BULLETIN  
 May - June 2018

**May 2018**

| Sun              | Mon                        | Tue            | Wed             | Thu                                      | Fri | Sat |
|------------------|----------------------------|----------------|-----------------|--|-----|-----|
|                  |                            | 1              | 2               | 3  | 4   | 5   |
| 6                | 7                          | 8<br>KGS Board | 9               | 10                                       | 11  | 12  |
| 13               | 14                         | 15             | 16<br>KGF Board | 17<br>KGF Spring Mixer<br>Petroleum Club | 18  | 19  |
| 20<br>AAPG ACE   | 21<br>Salt Lake City, Utah | 22             | 23<br>May 20-23 | 24                                       | 25  | 26  |
| 27               | 28                         | 29             | 30              | 31                                       |     |     |
| <b>June 2018</b> |                            |                |                 |  |     |     |

| Sun | Mon | Tue             | Wed | Thu | Fri | Sat |
|-----|-----|-----------------|-----|-----|-----|-----|
|     |     |                 |     |     | 1   | 2   |
| 3   | 4   | 5               | 6   | 7   | 8   | 9   |
| 10  | 11  | 12<br>KGS Board | 13  | 14  | 15  | 16  |
| 17  | 18  | 19              | 20  | 21  | 22  | 23  |
| 24  | 25  | 26              | 27  | 28  | 29  | 30  |